

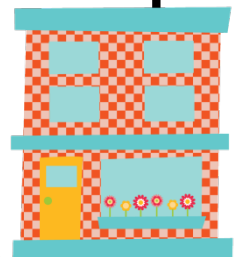


FRACTION AVENUE



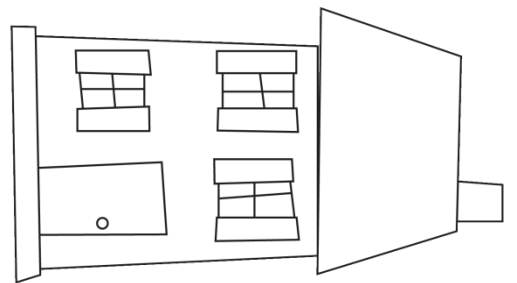
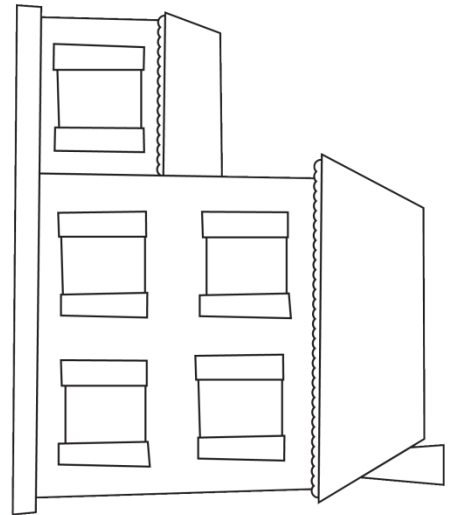
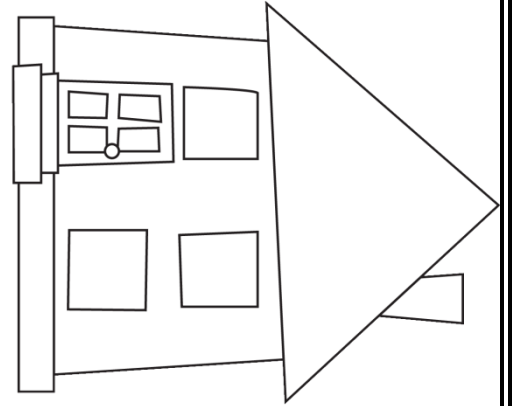
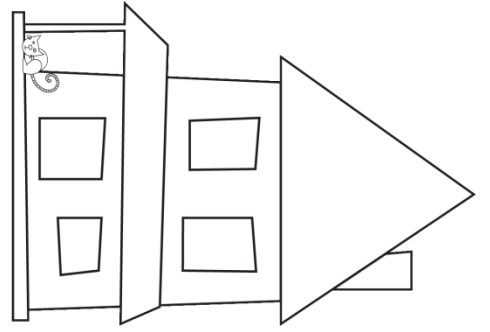
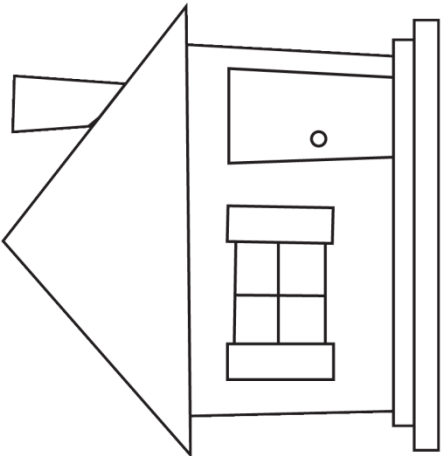
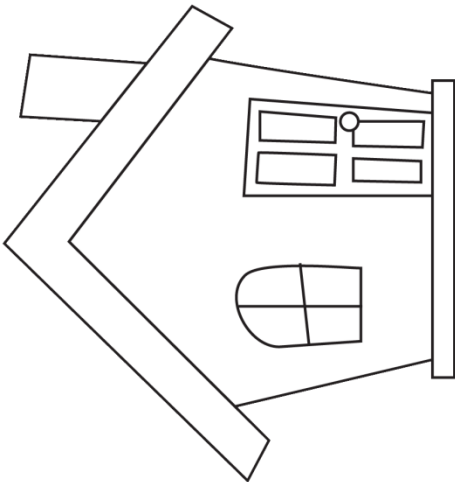
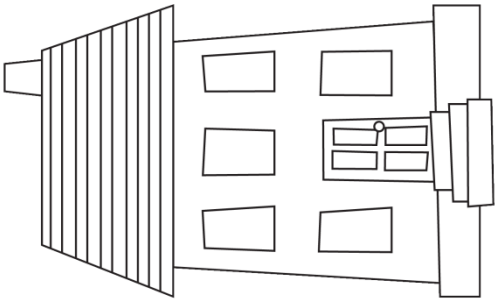
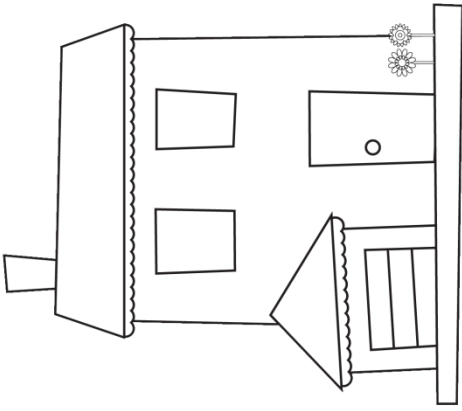
Congratulations! You have just moved to Fraction Avenue, which is a street full of fractions. Use the following information to complete the map of your new street.

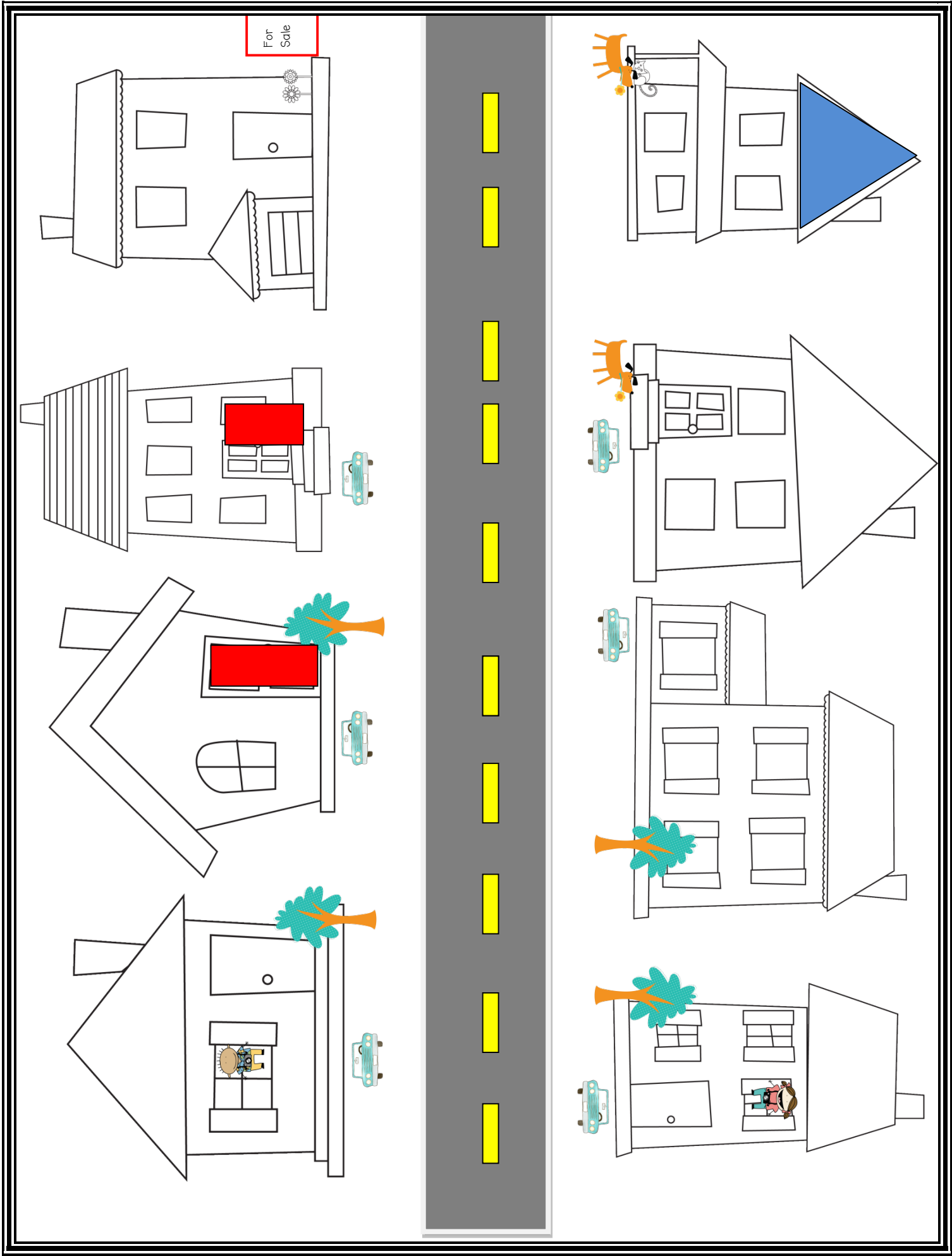
- $\frac{1}{8}$ of the houses are for sale
- There are trees in the front yard of $\frac{1}{2}$ of the houses
- $\frac{2}{8}$ of the homes have dogs outside.
- You can see a person in $\frac{1}{4}$ of the windows
- $\frac{3}{8}$ of the homes have a red door
- There are cars parked outside of $\frac{3}{4}$ of the houses
- $\frac{1}{8}$ of the houses have a blue roof



Bonus

Write your own fraction problems on the back and add those details to your neighborhood too!

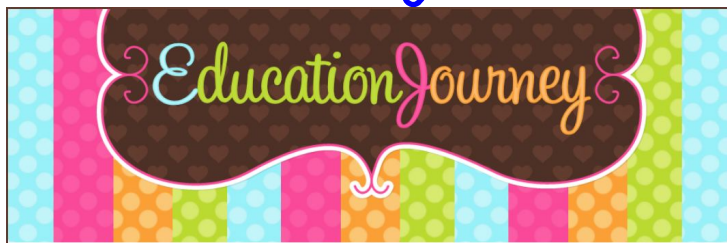




I hope that you find the Fractions Avenue useful. If you like this, you may want to check out the link to my entire [fractions collection](#), where there are additional activities and worksheets to teach your students about fractions.

You may also want to visit my [blog](#) (ashleigh-educationjourney.com) to see more instructional ideas and pictures of many of my products. I also use the pages to share information about upcoming sales, new products, and of course [freebies](#), so be sure to follow me!

[Ashleigh](#)



All images are from letteringdelights.com